



Vault door Grade V With built in emergency door

The door can be cast or delivered to a prefabricated vault where for example: weapons, explosives, medicines, jewelry, watches and other valuable are stored. Robur's Grade V door is also used in museums and for archivists.
The vault door has a built in emergency door.



The vault door in Grade V is primed finish as standard.



Both vault door and the emergency door are equipped with two changeable key locks. Electronic combination locks (for both doors) on special order.



Provided as standard with alarm cabling between the door and its frame through one of the hinges. One door stop holder is delivered with the door as standard.
The door is prepared for a grille gate as standard.



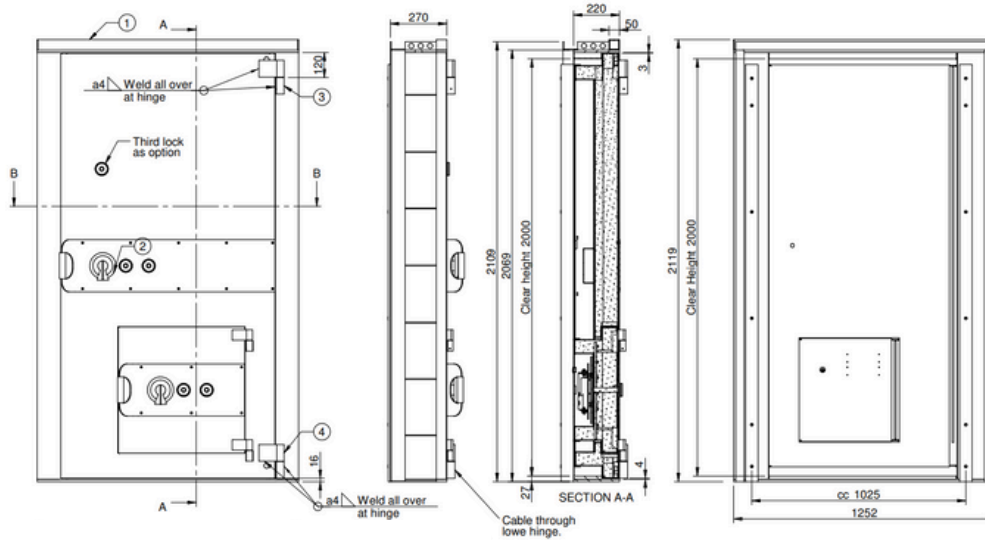
Fire protected according to EI90.



Burglary protection certified by SBSC according to the European standard EN 1143-1.

WEIGHT AND MEASUREMENTS

	RVD Grade V with built in emergency door
Standard clear opening measure H * W mm	2000 * 900
Max. clear opening dimensions for certified door	2200 * 1000
Emergency door measures H * W mm	500 * 500
Frame	The frame is designed for 250 mm wall thickness.
Weight kg	1300



HANGING OF DOOR AND GATE:

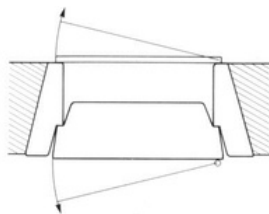


fig. 1. Door - right hung
Gate - left hung

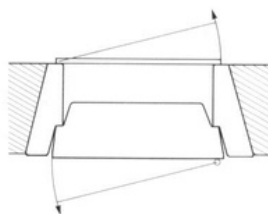


fig. 2. Door - right hung
Gate - right hung

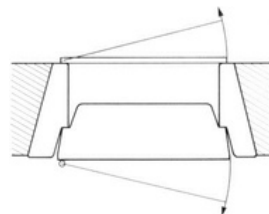


fig. 3. Door - left hung
Gate - right hung

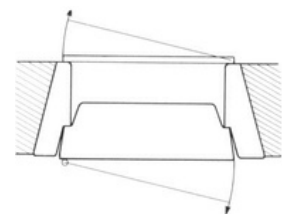


fig. 4. Door - left hung
Gate - left hung

We reserve the right to alter the specification without prior notice.



Head office:
Robur Safe AB
Lundbyvägen 8
311 68, Slöinge
Sweden

+ 46 346 260 260
info@robursafe.com
www.robursafe.com